

REGIONE LAZIO
AZIENDA UNITA' SANITARIA LOCALE VITERBO - VIA ENRICO FERMI, 15 - 01100 VITERBO - P.IVA 01455570562

RISTRUTTURAZIONE, ADEGUAMENTO E MESSA A NORMA DELL'OSPEDALE DI CIVITA CASTELLANA (VT)

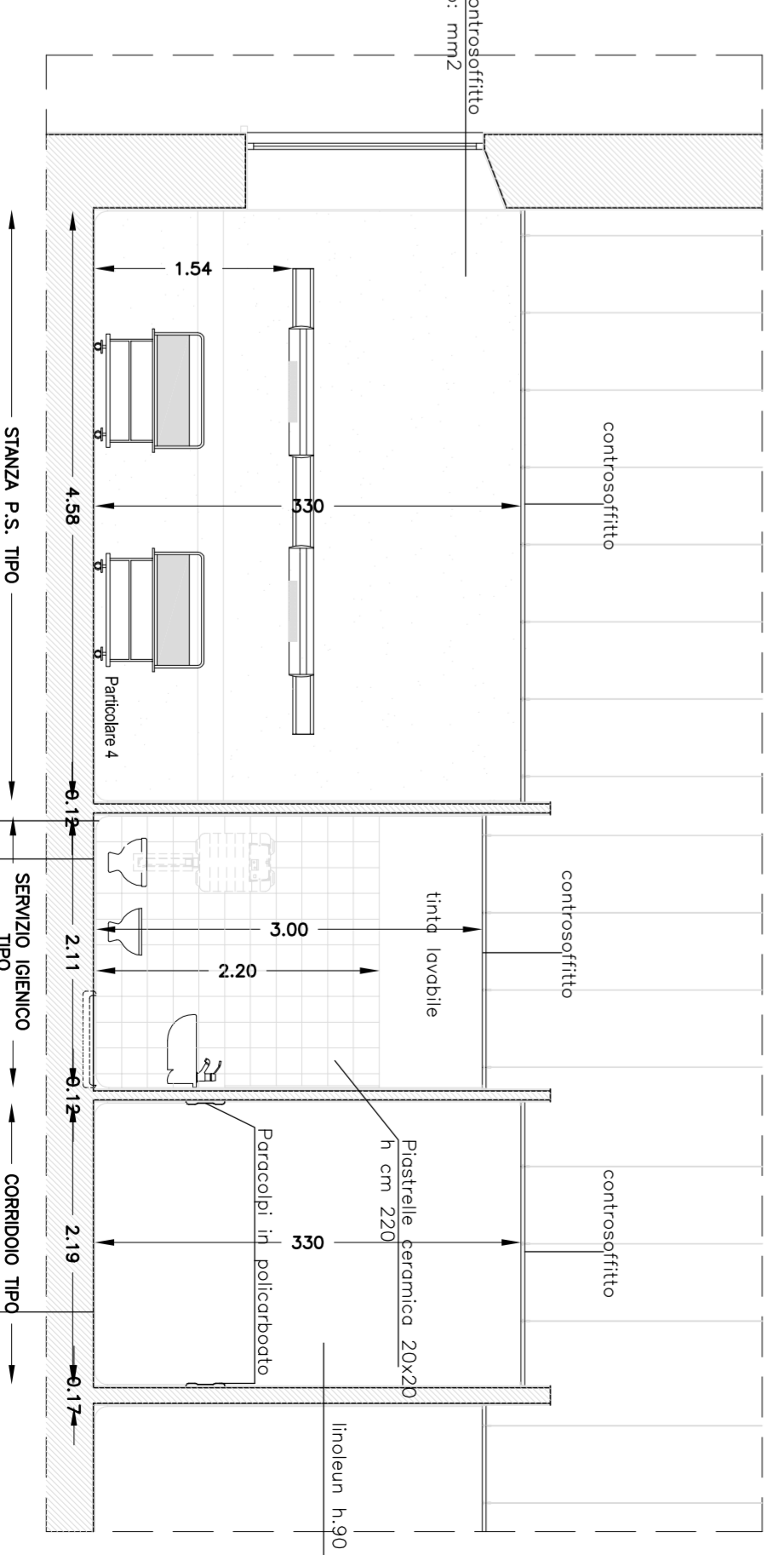
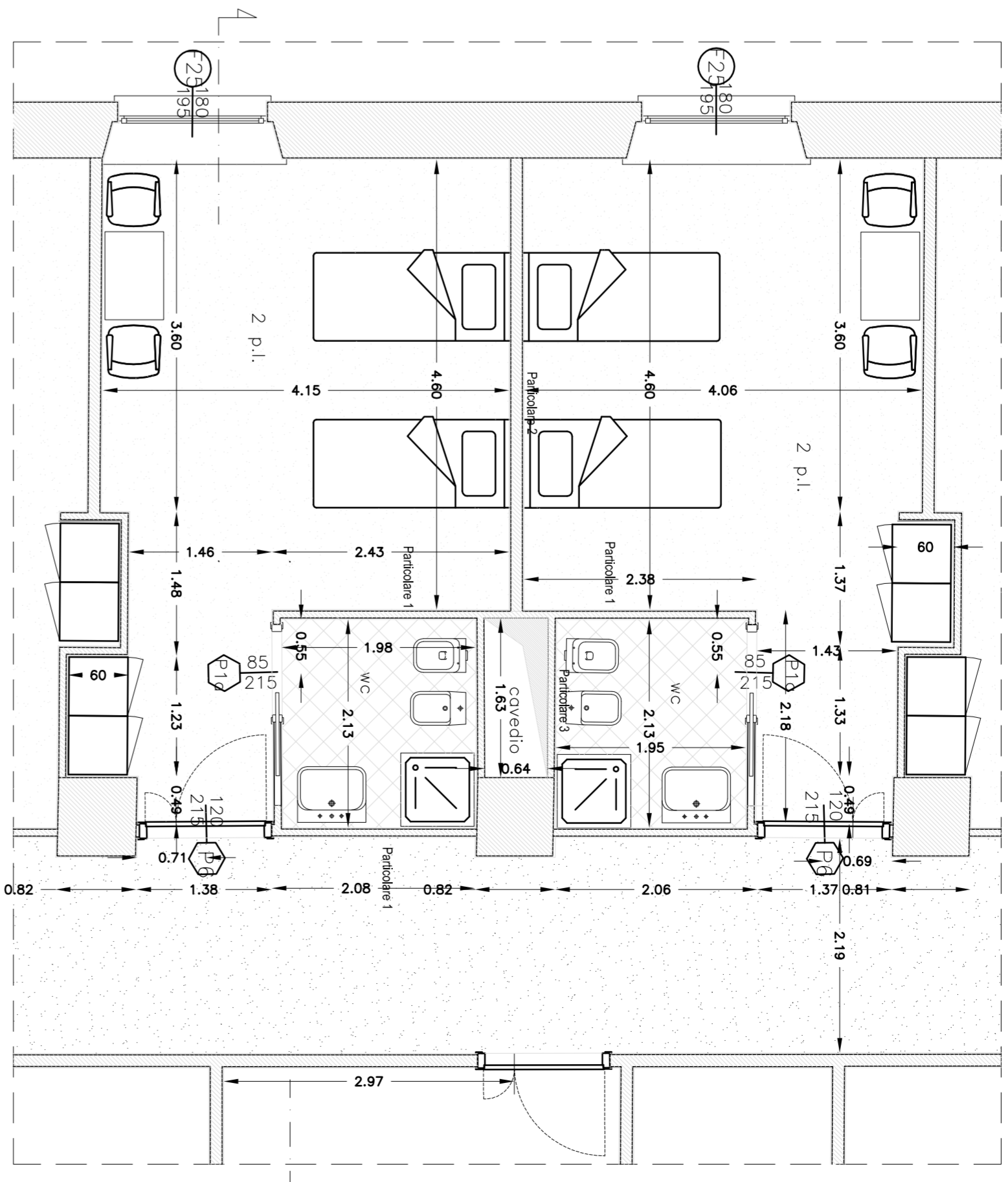
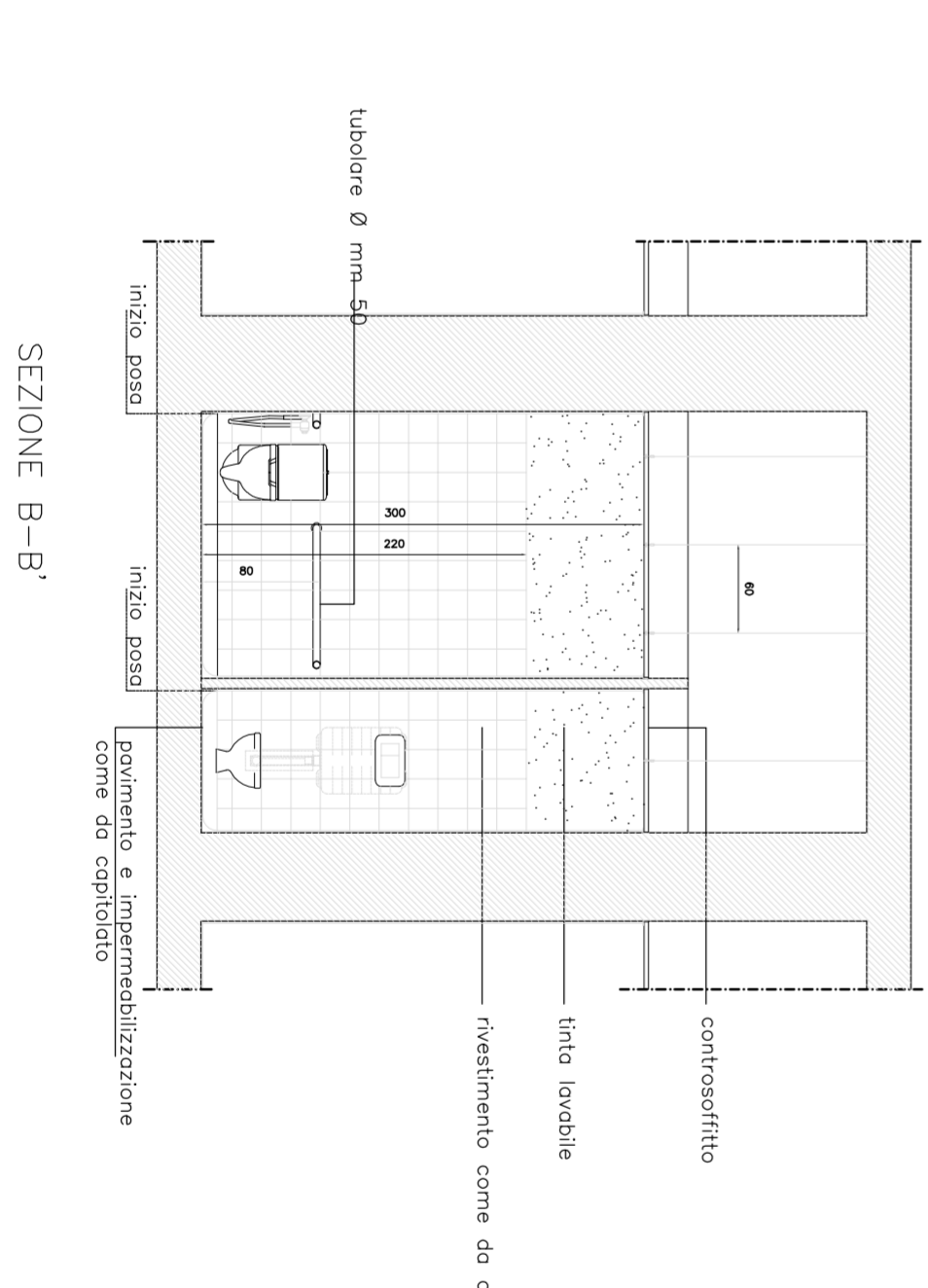
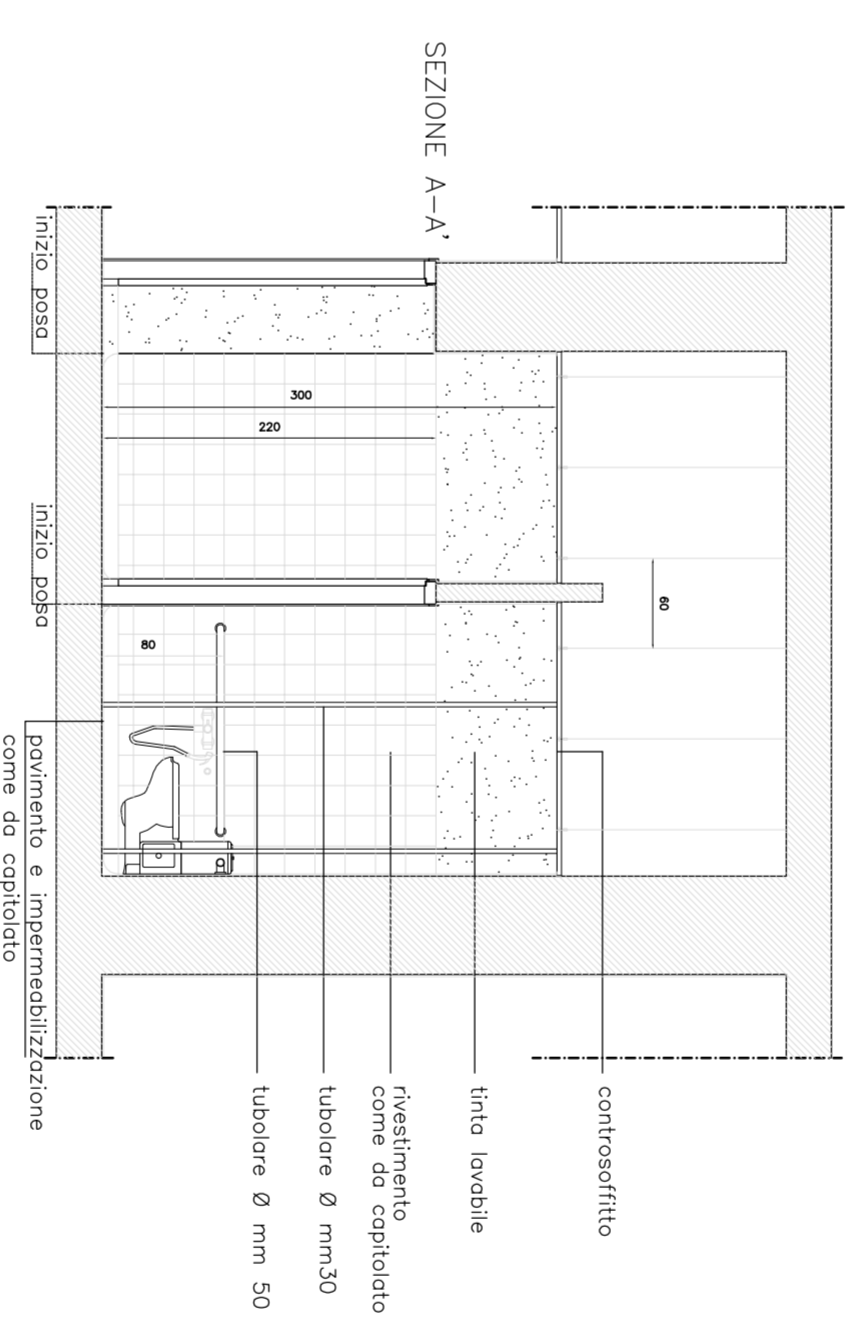
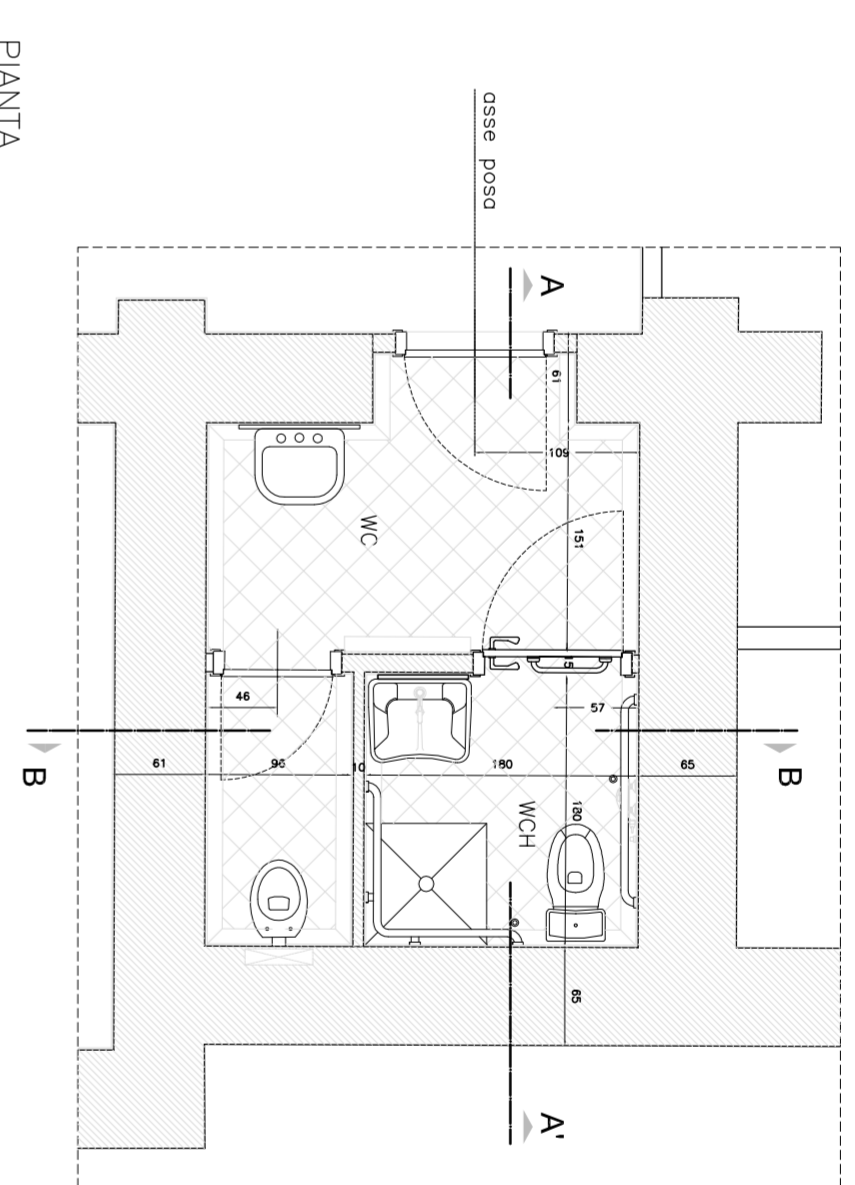
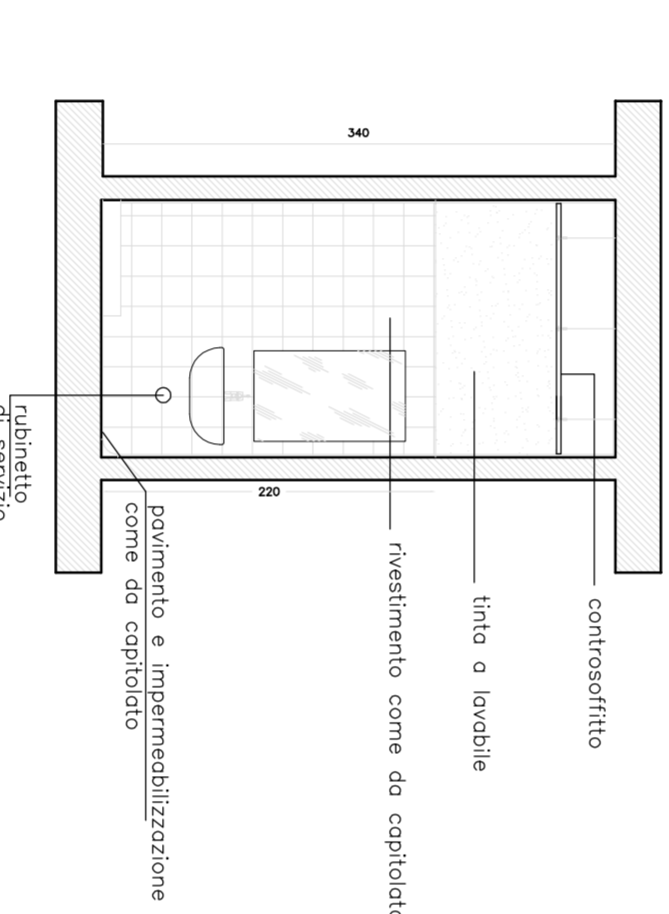
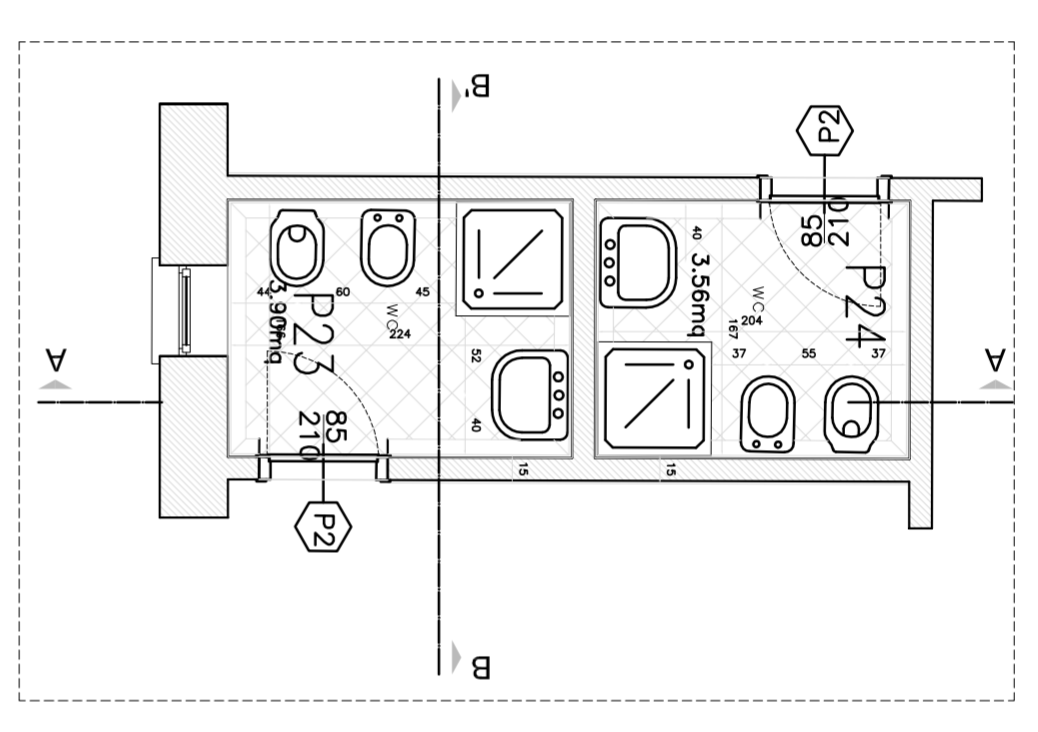
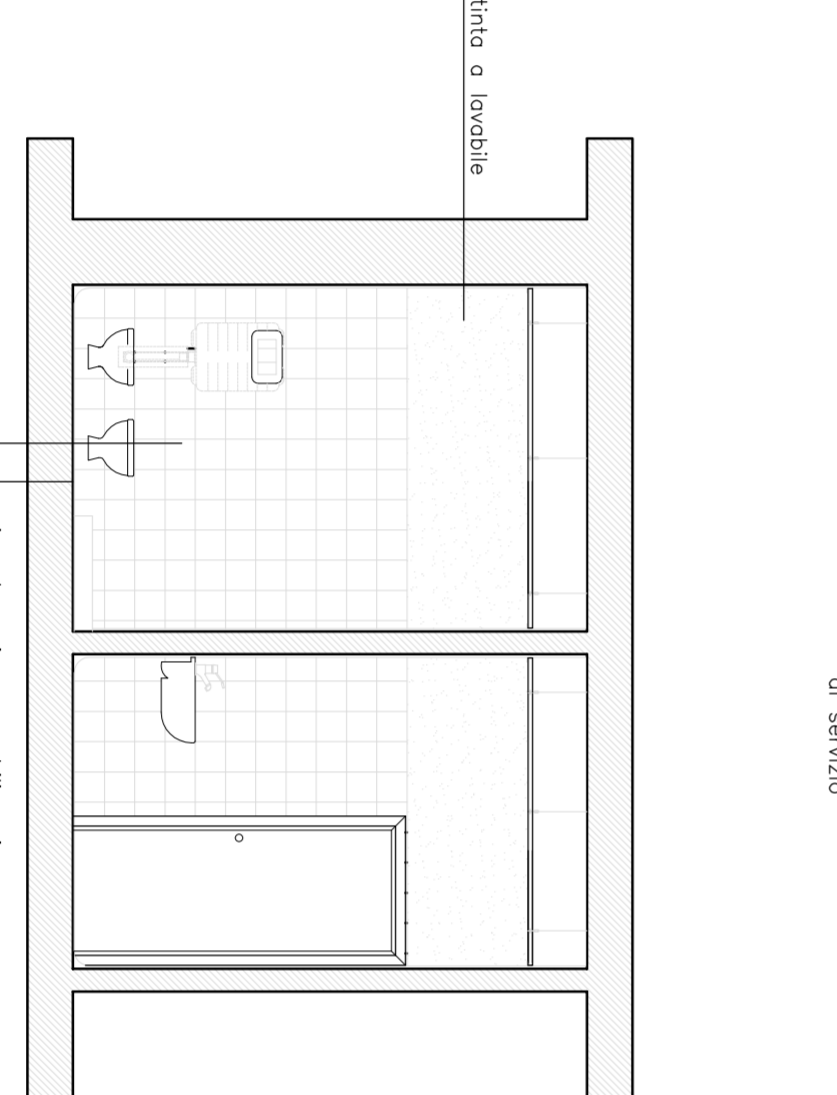
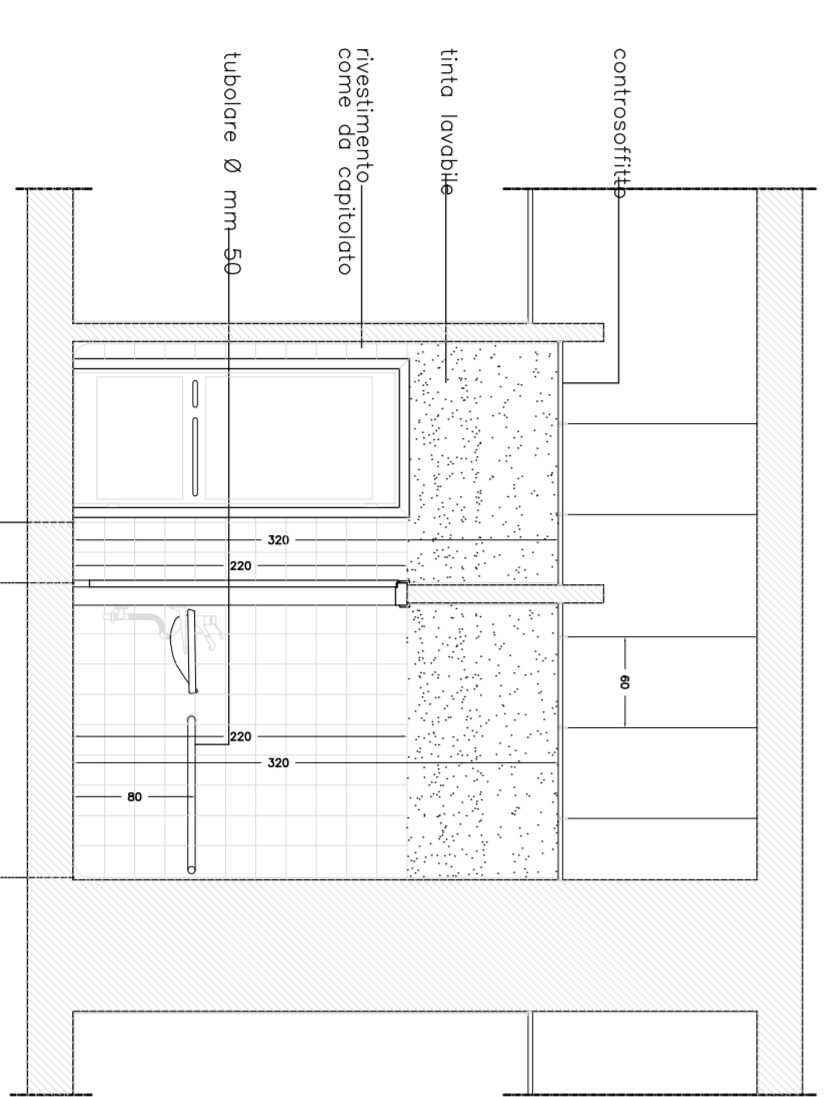
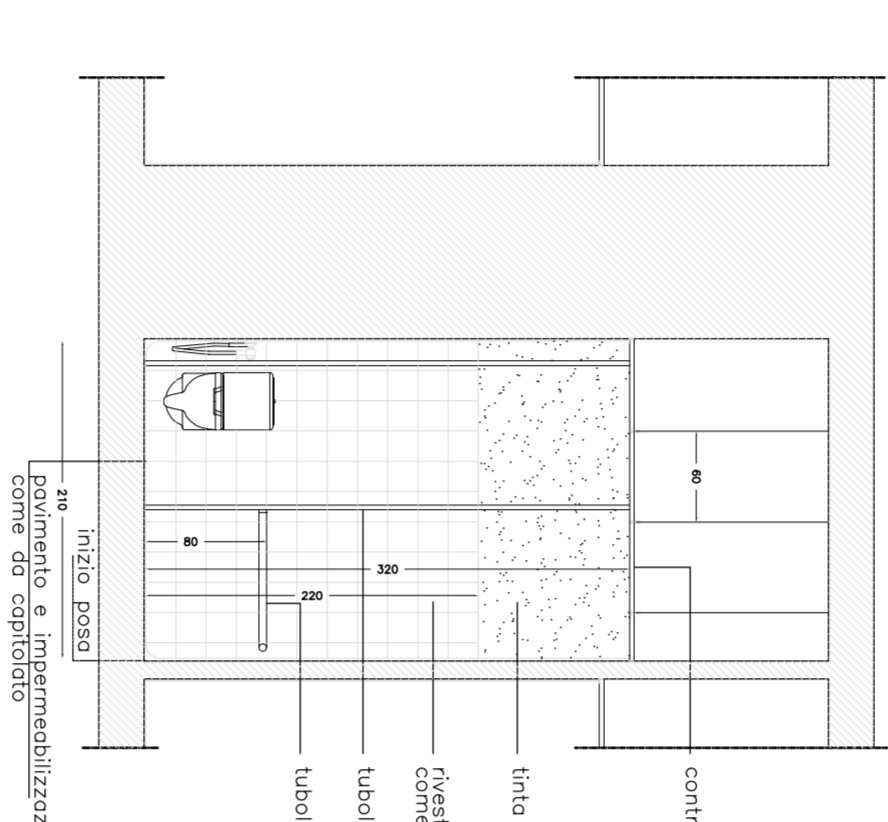
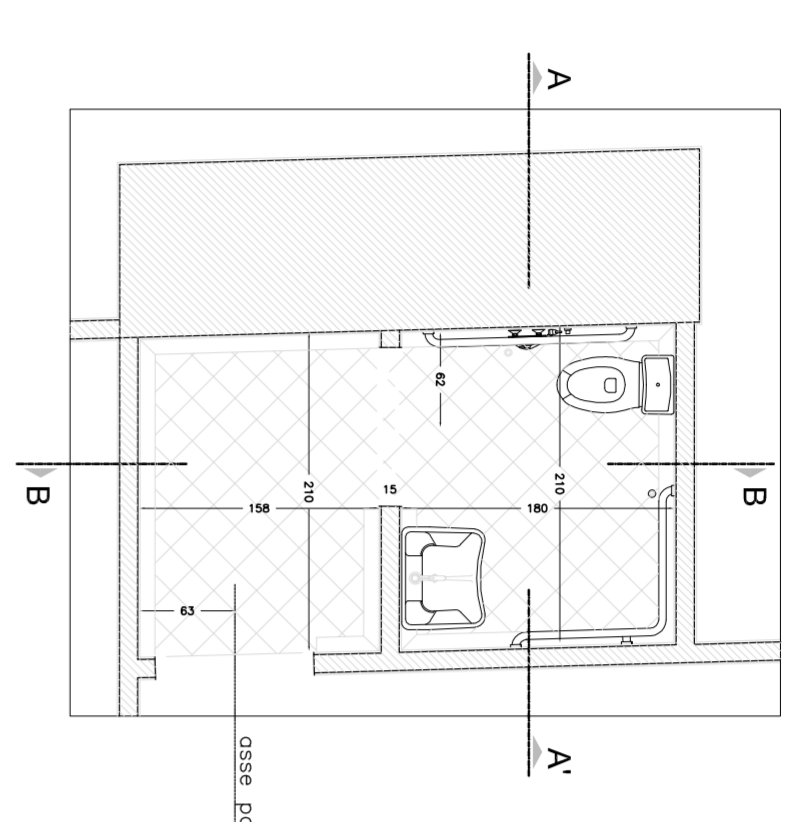
FASE 3: PRONTO SOCCORSO - PROGETTO ESECUTIVO -

RESPONSABILE UNICO DEL PROCEDIMENTO
 - Arch. Marco Iobbi

PROGETTAZIONE:
 - Arch. Giuseppe Manara
 Via del Babuino, 107 - 00187 Roma
 - Ing. Vittorio Cassani
 Via Muro Clementi, 70 - 00193 Roma
 - Ing. Massimo Avdini
 Viale Igino Carlini, 51 - 01100 Viterbo
COORDINATORE ALLA SICUREZZA:
 - Ing. Vittorio Cassani
 Via Muro Clementi, 70 - 00193 Roma

OGGETTO:
SERVIZI IGIENICI TIPO STANZA TIPO - CORRIDOIO TIPO AMBULATORIO TIPO

DATA:	MARZO 2012	SCALA:	1:50
DATA:	MARZO 2012	DATA PROGETTO:	MARZO 2012
FILE:	PS_AR.08.dwg		



PiC d'arzo, h. fino al centrosifitto
 in tel. all. mt. 1,5 sp. mm2